

SERIAL NUMBER:

Technical and Service Manual

SF-100 Case Positioner

MANUFACTURED in the USA

BY:

UNITECH, INCORPORATED
HOUSTON, TEXAS 77080
USA

Phone: (713) 589.9449

TABLE of CONTENTS

(Section I) Specifications

(Section II) Introduction

(Section III) Functional Description

(Section IV) Installation

(Section V) Setup

(Section VI) Operator Interface

(Section VII) Warranty

Unitech Incorporated

Copyright Notice

All materials contained within are property of Unitech, Incorporated unless otherwise noted. These materials are provided for informational purposes only to the purchasers and operators of Unitech, Incorporated products.

Copyright © Unitech, Inc.

Section I

Specification

SF-100 Case Positioner

Power Requirements:

VOLTAGE	PHASE	FREQUENCY	AMP.
110 VAC	SINGLE	60 HZ	11.0 A

Compressed Air Requirement:

	PRESSURE	VOLUME
U.S.	90 PSI	8.25 CFM
METRIC	6.16 BARS	.234 CU.

The SF 100 is designed to reposition high cases at a rate of 1 case every 1.2 seconds.

NOTICE

IT IS ESSENTIAL THAT THIS MANUAL BE READ AND UNDERSTOOD BY QUALIFIED PERSONNEL BEFORE INSTALLATION OR START UP OF EQUIPMENT.

Section II

Introduction

THE SF-100 CASE POSITIONER

Model SF-100

.....

NOTICE

**IT IS ESSENTIAL THAT THIS MANUAL BE READ AND UNDERSTOOD
BEFORE EQUIPMENT INSTALLATION OR START UP.**

.....

INTRODUCTION

The SF-100 Case Positioner is a very compact and flexible System that repositions misaligned cases nearly as fast as they are fed through it.

This manual provides the information required for maximum efficiency of your system. The manual should be read thoroughly and all personnel involved in installing, operating and maintaining the system should study this manual carefully.

A Unitech serviceman is available to assist with installation and training. Arrangements for service should be made directly with Unitech. Prior to a start up service visit, the system should be positioned in its permanent location and connected to the factory air and electric facilities. Further, the list of recommended spare parts should be on hand during start up.

Warning

All operators must be properly trained in the use of this equipment.

Section III

FUNCTIONAL DESCRIPTION

GENERAL

Under normal circumstances cases are dropped on to the conveyor by the top out in the proper position (i.e., the bottom of the case facing up, the open end facing down). Cases fed onto the conveyor that are not in the proper position are rapidly and correctly repositioned with the open face down allowing trash to fall out. The process of repositioning takes approximately 1.2 seconds. The SF-100 used in conjunction with a C Series Case Inspection System insures that all cases that proceed downstream to the filling room are properly positioned and have structural integrity.

Warning

Care must be taken over the following:

- 1. Cases entering case positioner must not be interfered with while the system is active.***
- 2. Do not place hands in the case positioner during operation.***

Warning

Care must be taken over the following:

- 1. Electrical Connections and Panels should not be opened with or interfered with except by suitably qualified technicians.***
- 2. Machine must be operated with guards in place.***
- 3. Stop, Self Test and Setup functions should be checked weekly by a qualified technician.***

Section IV

Installation

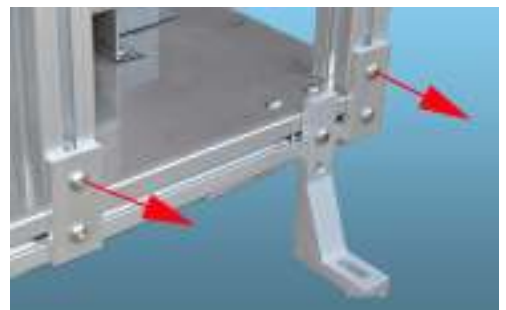
Warning

Ensure that only qualified personnel perform any lifting and transport operations required to place the equipment in the designated location.

It is important to do the following steps in the order presented to obtain the correct overall height of the system.



Remove the SF-100 from the shipping crate and set it on the floor near the installation site.



Back the screws out of the top holes of the eight attaching brackets on both sides of the unit and lift the top of the unit off the base plate and set it on floor.



Remove the floor legs from the base plate and set the base plate on top of two milk crates as illustrated in the image at the bottom of the page.



Attaching the SF-100 to the Conveyor



Note the location of the multi tube buses on each side of the base plate. When the base plate is positioned correctly, the Multi-Tube Buses will be positioned in the in-feed end of the base plate (i.e., closest to the conveyor elevator). Slide the SF-100 Base Plate in between the top chain channel and the bottom chain channel. Line up the two holes on each end of the base plate with the two holes in each of the two mounting bars. Hold the base plate firmly up to the mounting bars and slide a dairy case forward through the unit making sure that the case does not come in contact with the cylinder rod pins on the sweep plate. There should be 1/8 to 1/4 inch distance between the top of the pin and the top of the chain. If the case



catches on the pins or is less than 1/8 inch it is necessary to use spacers.



If it is necessary to use the spacer it needs to be inserted on top of the base plate and under the mounting bar. Each spacer is 1/8 inch thick and serves to lower the base plate so that the chain height is sufficient to carry the dairy case and clear the pins on the sweep plate. Use as many as needed to reach the appropriate height.

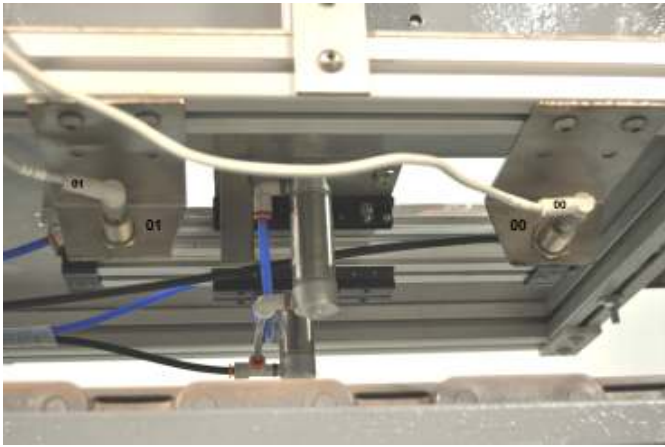


After the base plate is lined up insert the 3/8 by 2-1/2 bolts and washers as shown left. Secure on the under side with lock screws.

Unitech Incorporated



When the base plate is secured to the conveyor, set the frame onto the base plate and reattach the two pieces by reinserting the button head screws previously removed from the attaching plates. Note that the position of the In-Feed Guides is on the in-feed end of the SF-100. After the frame is securely reattached to the base plate connect the top halves of the Multi-Port Tube Buses located on each side of the unit to the bottom halves bracketed to the base plate.



Connect the two Proximity Switches to the two lead cables. The Proximity Switch Brackets and cable quick disconnect heads are correspondingly marked, 00 and 01.



Power up Instructions

Connect plant air to the manual cut off valve (C)

Remove and discard power cord and connect to the plant 110 VAC (C)

With the front panel closed, pull the E Stop switch (B) into the on position.

Unitech Incorporated

Warning – after connecting power and air keep hands away from inside the unit and stand clear of the reject port.

Electrical Connections and Panels should not be opened or interfered with except by a suitably qualified electrical technician.

- ❖ Connect the system to factory power. Refer to electrical diagram ([Appendix E](#)) for power input requirement.
- ❖ The SF-100 Case POsitioner is supplied with a temporary external power supply cord for connection to a typical 110 VAC plug.
- ❖ Permanent electrical should be accomplished by removing the conduit cover located on the right hand side if the control cabinet and plant power should be connected to the wiring labeled, 110 HOT, 110 NEU, and GRD.
- ❖ Auxiliary contacts are supplied for plant-defined usage. These are located in the conduit on the right hand side of the control cabinet. These wires are for plant-defined devices such as an audible horn, remote alarm light, etc. These allow the plant to have a remote device to indicate the Case Inspection Systems' status. ([Refer to Electrical Diagram in Appendix E](#))
- ❖ The E-Stop switch located on the front of the control cabinet will remove the power source to all outputs and pneumatic air pressure supply. ([Refer to Electrical Diagram in Appendix E](#)).
- ❖ Refer to Electrical Diagram for all other electrical connections and schematics.

Warning

The electrical power to the Allen Bradley Micrologix 1200 PLC remains live until the electrical circuit control panel is switched off.

Section V

Setup

Your SF-100 has been preset at the factory for standard size cases.

After plant air and power are supplied to the unit, confirm the air pressure setting.



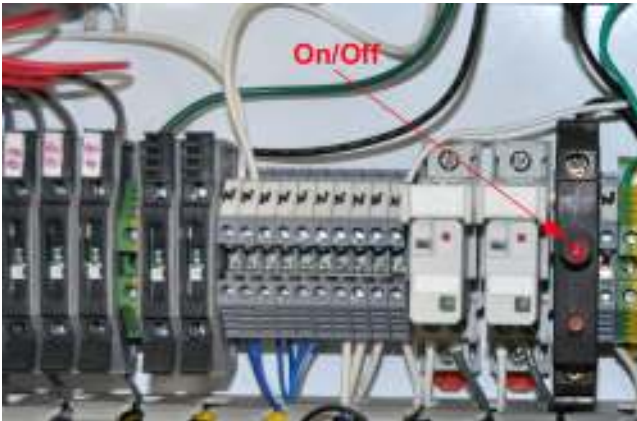
Turn the red knob on the Manual Shut-Off Valve to the “SUP.” position. See illustration to the left.

Next note the needle position on the Air Regulator. It should be positioned at 90 PSI.



If the gauge does not read 90 PSI then the regulator must be adjusted. To adjust the air pressure first lift the black knob on the regulator up, exposing the orange ring. (See the illustration below) Turn the knob to the left or right to bring the air pressure to 90 PSI.





After the air has been regulated to 90 PSI it will be necessary to power up the unit. Open the control box enclosure door and locate the primary circuit breaker. (See illustration to the left.) Push the button marked “5.” The unit will power up and be ready to operate. Securely close the enclosure door.

Section VI

Operator Interface

MAIN DISPLAY

The main display will keep a record of the number of cases repositioned.

The push button labeled “reset” will reset the data values to zeros, which is indicated by the symbol “↓.”

MODES OF OPERATION

In order to enter into the different modes of operation, depress the button labeled mode and you will be able to scroll thru the machine mode operations. The push button labeled “mode” will scroll thru the machine mode operations. Then by depressing the “enter” push button the unit will enter into one of the following two modes..

- Run
 - Machine in case inspection and reposition mode
- Stop
 - Case flow ceases - unit will stop

Section X

Warranty

UNITECH, INCORPORATED STANDARD TERMS AND CONDITIONS OF SALE

The equipment, software, material and services (collectively, the "Equipment") which are described on the face hereof shall be sold by Unitech, Incorporated ("Seller") only upon the following Standard Terms and Conditions of Sale:

1. **CONTRACT TERMS:** These Standard Terms and Conditions of Sale (the "Contract") are the only terms and conditions applicable to the sale of the Equipment. Contract formation and acceptance by Seller are expressly conditioned upon Customer's assent to the terms of this Contract. If the terms of this Contract are not acceptable, Customer must notify Seller of its objections at once. Customer shall be deemed to have agreed to this Contract unless notice to the contrary is received by Seller within ten days from the earlier of the date of Seller's sales confirmation or invoice. The transmittal of a purchase order with regard to a quotation by Seller shall constitute an acceptance of the quotation and the Contract of Sale as set forth therein if the purchase order agrees with such quotation with respect to the description of the Equipment to be furnished by Seller as shown on the face thereof, the quality thereof and purchase price to be charged therefore. ANY REPRESENTATIONS, PROMISES, WARRANTIES, OR STATEMENTS BY SELLER'S AGENT OR EMPLOYEE THAT DIFFER IN ANY WAY FROM THE TERMS OF THIS CONTRACT SHALL BE GIVEN NO FORCE OR EFFECT. Any additional or different terms or conditions set forth in any communications, including without limitation a telephone **order**, a request for quotation, or purchase order form, from Customer are objected to by Seller and shall not be effective or binding unless expressly assented to in writing by an officer of Seller. All shipments are made pursuant to this Contract. No other terms or additions are acceptable. This Contract is intended as a final and complete expression of the agreement between Seller and Customer.

a) A sales confirmation or similar form issued by Seller pursuant to a Customer's purchase order constitutes an expression of acceptance of such purchase order, but such expression of acceptance is expressly conditioned upon Customer's assent to the Contract.

b) Where Seller does not issue either a quotation or a sales confirmation and ships Equipment pursuant to Customer's purchase order, telephone request or other form of order, such sale shall be subject to Seller's Contract as set forth on Seller's invoice and Customer shall be deemed to have agreed thereto unless the Equipment is returned to Seller at Customer's expense within ten days of date of invoice, in which event such sale shall be canceled for all purposes. As set forth above, any additional or different terms or conditions of sale set forth in the purchase order or other communications from Customer are objected to by Seller and shall not be effective or binding unless assented to in writing by an officer of Seller.

c) Any typographical or clerical error herein is subject to correction by Seller.

2. **PRICES AND QUOTATIONS:** (a) All prices are F.O.B. Seller's warehouse in Houston, Texas or such other of Seller's locations as Seller may choose, unless otherwise specified. Except as otherwise provided therein, Sellers prices for the Equipment shall remain in effect for thirty (30) days from the date of Seller's quotation.

b) All prices quoted by Seller are subject to any addition which may be necessary to cover any taxes or charges or any applicable increase in same hereafter becoming effective, such as, for example, the payment of any applicable sales, use, excise or other taxes, or import duties, documentation charges, freight, insurance, packing charges, or similar costs or charges.

3. **PAYMENT TERMS:** (a) Subject to the approval of Seller's Credit Department, and unless otherwise agreed in writing, terms of payment are fifty percent (50%) with purchase order and balance due on delivery.

b) All payments shall be made in U.S. currency to Seller at its offices in Houston, Texas, or as Seller otherwise directs.

c) The amount of any invoice shall be deemed to be accurate unless Seller receives written notification from Customer disputing the amount or validity of any such invoice before the payment due date and before payment has been made. Any such notification shall be sent to Seller at 1923 Hoskins Drive, Houston, Texas 77080, Attn.: Accounts Receivable. Any such notice shall include the invoice number and a description of the alleged error.

d) Seller shall have the right, among all other available legal remedies, to terminate this Contract and/or to suspend further deliveries under this or other agreements with Customer if Customer fails to make any payments to Seller when due.

4. **CANCELLATION:** Prior to acceptance of the Equipment, Customer may terminate its order for any or all of the Equipment covered by this Contract, provided that, (a) Seller is given reasonable advance written notice of such termination and (b) Seller is paid termination charges which shall include all costs and expenses already incurred or commitments made by Seller in connection with the processing, purchasing, handling and fabrication of the Equipment, and a reasonable profit thereon plus any losses or damages resulting from such cancellation or termination. Seller's determination of such termination charges shall be conclusive.

Unitech Incorporated

5. DELIVERY AND DOCUMENTATION: (a) Customer shall bear the risk of loss for damage to or destruction of the Equipment from the earlier of the time that Seller delivers such Equipment to the carrier or to Customer or Customer's agent. Any claims for loss or damage after risk of loss has passed to Customer shall be filed with the carrier. Customer shall give written notice to Seller of any claim for shortage, error in Equipment shipped or error in charges within thirty (30) days after receipt of Equipment or such claim shall be deemed waived.

b) Quoted delivery dates are approximate estimates determined at the time of quotation and are subject to revision at any time.

c) All shipping dates are approximate and are based upon prompt receipt by Seller of all necessary information from Customer to properly process the order.

d) Delivery dates are subject to changes caused by additions to or modifications of the original order agreed to by both Seller and Customer.

e) Under no circumstances shall Seller have any liability whatsoever for loss of use or for any indirect or consequential damages as a result of delayed delivery.

f) Unless otherwise agreed in writing Seller shall have the option of partial or complete shipment of the Equipment.

g) Seller shall provide Customer with such data or documentation, if any, as specified in the quotation. If additional copies of such data or documentation are requested by Customer, Seller will provide such additional copies at Customer's expense. If Customer requests different or non-standard data or documentation, Seller, at its sole option, may provide such different or non-standard data or documentation at Customer's expense.

6. RETURNS: Subject to the terms of this Contract regarding cancellation and warranties, all sales are final. Customer may request to return Equipment by contacting its account salesperson to request a return authorization number. No Equipment will be accepted for return without a valid return authorization number clearly noted on the outside of the shipment. Any return shipments must be made freight prepaid unless Seller has expressly authorized Customer in writing to ship such Equipment to Seller at Seller's expense. Any returns of Equipment authorized by Seller are subject to Seller's standard restocking charges.

7. INSTALLATION, MAINTENANCE, ETC.: All equipment shall be installed by and at the expense of the Customer. Customer shall be responsible for receiving, storing, installing, starting up and maintaining all Equipment. Customer may request the Seller to provide a quotation for providing services to assist Customer in all or part of these duties.

8. SERVICES: (a) Services rendered by Seller, whether with or without charge, are only technical or advisory in nature and are merely incidental to the sale of the Equipment. When any such services are rendered, Customer will retain full responsibility for and full control, custody and supervision of the Equipment and the installation, selection of material there for, use or operation thereof, and a representative of Customer shall be present with full authority to direct operations.

b) If Seller furnishes technical or other advice to Customer, whether or not at Customer's request, with respect to Customer's process or equipment, such advice shall be made in good faith, and Customer assumes all risk of such advice and the results thereof.

9. LIMITED WARRANTY AND DISCLAIMER: As set forth herein, different warranties may apply to different categories of Equipment. As to all Equipment, except as expressly set forth in this section and Section 11, SELLER MAKES NO REPRESENTATION OR WARRANTY OF ANY KIND, EXPRESS OR IMPLIED, AS TO MERCHANTABILITY, FITNESS FOR PARTICULAR PURPOSE, OR ANY OTHER MATTER WITH RESPECT TO ANY OF THE EQUIPMENT. The warranties made in this section are in lieu of any other warranty, express or implied and are expressly subject to Section 12 and the terms of this Contract. The warranties made in this section and in Section 11 are the only warranties made by Seller and can be amended only by a written instrument signed by an officer of Seller.

a) "Resale Products" shall mean any portion of the Equipment purchased by Seller from a third party for resale. If the Resale Products are subject to the manufacturer's or other third party warranties, Seller hereby assigns to Customer all of Seller's rights and remedies under such warranties to the extent that such rights and remedies are assignable.

b) "Unitech Products" shall mean any portion of the Equipment manufactured or fabricated by Seller. Subject to the terms of this Contract, Seller warrants that all Unitech Products will be free from defects in materials or workmanship under normal use and service until the expiration of twelve (12) months from the date of shipment by Seller.

c) "Consumables" shall mean that portion of the Equipment which is depleted or expected to rapidly deteriorate in ordinary use of the Equipment including, without limitation, glass parts and electrodes, membranes, liquid junctions, electrolytes and reagents, o-rings, plastic tubing, etc. Subject to the terms of this Contract, Consumables which do not constitute part of Resale Products are warranted by Seller to be free from defects in material and workmanship under normal use and service for a period of ninety (90) days from the date of shipment by Seller.

d) Subject to the terms of this Contract, Seller warrants that any portion of the Equipment consisting of Software will execute the program instructions provided by Seller. The foregoing warranty shall not apply to any such software, which is covered by a third party warranty. If any such portion of the Equipment consisting of Software is subject to the manufacturer's or other third party warranties, Seller hereby assigns to Customer all of Seller's rights and remedies under such warranties to the extent that such rights and remedies are assignable.

Unitech Incorporated

e) Subject to the terms of this Contract, Seller guarantees the workmanship in all non-warranty service, including, without limitation, repair and maintenance service, performed by Seller for a period of twelve (12) months from the date of the service in the case of service related to mechanical equipment and for a period of ninety (90) days from the date of the service in the case of service related to electronic equipment.

f) Subject to the terms of this Contract and unless otherwise expressly provided herein, Seller warrants title to all Equipment sold under this Contract.

g) Customer must notify Seller in writing of any warranty defects within thirty (30) days after discovery thereof. Failure by Customer to give such written notice within the applicable time period shall be deemed an absolute and unconditional waiver of Customer's claim for such defects. If timely written notice of such defects is given to Seller and Seller concludes that such defects are covered by a warranty made by Seller in this Contract, Seller shall, at its option and as Customer's sole and exclusive remedy hereunder, promptly correct any errors that are found by Seller to exist in the Software, or repair or replace F.O.B. point of manufacture, that portion of the Equipment found by Seller to be defective. Customer agrees that Seller shall have no liability for warranty defects alleged to exist in Resale Products; however, Seller agrees to make a reasonable commercial effort, if requested to do so by Customer, to arrange for procurement and shipping of replacement Resale Products, at Customer's expense. Equipment repaired and parts replaced by Seller during the warranty period shall be subject to the warranties made by Seller in this Contract for the remainder of the original warranty period.

h) The warranties made by Seller in this Contract do not apply to replacements or repairs necessitated by inadequate preventative maintenance, or by normal wear or usage, or by fault of Customer, or by unsuitable power sources or by attack or deterioration under unsuitable environmental conditions, or by natural disaster, sabotage, abuse, accident, alteration, misuse, improper installation, modification, repair, storage or handling, or any other cause not the fault of Seller. The warranties made by Seller in this Contract do not apply to (i) any Equipment, which has been modified or subjected to unauthorized repairs, or (ii) any item, which is a component part of the Equipment where such item is furnished by Customer.

i) Seller's obligation to repair or replace defective Equipment constitutes agreed and liquidated damages and the sole remedy for any breach of warranty by Seller. Seller shall have the right to inspect any Equipment claimed to be defective and shall have the right to determine the cause of such claimed defect. All Equipment replaced or repaired by Seller under its warranty shall be replaced or repaired F.O.B. Seller's warehouse, Houston, Texas, or such other location as Seller may designate.

j) For purpose of this Contract, "date of shipment by Sellers" shall mean the earlier of the date that the Equipment is delivered for shipment or the date of delivery to Customer if Customer (or Customer's agent) picks up or otherwise takes delivery of the Equipment without shipment by Seller.

10. CUSTOMER DATA / SPECIFICATIONS: To the extent that Seller has relied upon any specifications, information, representation of operating conditions or any other data supplied in writing by Customer to Seller in the selection or design of the Equipment or otherwise in connection with this Contract or the preparation of Seller's quotation, and in the event that the actual operating conditions or other conditions differ from those supplied by Customer and relied upon by Seller, ANY WARRANTIES OR OTHER TERMS AND CONDITIONS CONTAINED HEREIN WHICH ARE AFFECTED BY SUCH CONDITIONS SHALL BE NULL AND VOID.

11. PATENTS: Subject to the terms of this Contract, including, without limitation, Sections 9 and 12 hereof, Seller warrants that any Unitech Products sold pursuant to this Contract, or the use thereof as provided below, does not infringe any valid U.S. patent in existence as of the date of delivery. Customer must notify Seller of any claim or suit involving Customer in which infringement is alleged within thirty (30) days after any such claim is made or suit is filed. Failure by Customer to give such written notice within the applicable time period shall be deemed an absolute and unconditional waiver of Customer's claims under this section. Customer must permit Seller to control completely the defense of compromise of any such allegation of infringement. Seller's warranty as to use only applies to infringements arising solely out of the inherent operation (i) of such Unitech Products, or (ii) of any combination of Unitech Products and Equipment sold hereunder in a manner designed by Seller. Subject to the terms of this Contract, if the Resale Products, UPO Equipment or any other portion of the Equipment are subject to the manufacturer's or other third party warranties relating to patent or copyright infringement, Seller hereby assigns to Customer all of Seller's rights and remedies under such warranties to the extent that such rights and remedies are assignable.

12. LIMITATION OF REMEDY AND LIABILITY: CUSTOMER'S EXCLUSIVE REMEDY SHALL BE FOR DAMAGES, AND SELLER'S TOTAL LIABILITY FOR ANY AND ALL LOSSES AND DAMAGES ARISING OUT OF ANY AND ALL CAUSES WHATSOEVER (WHETHER SUCH CAUSE BE BASED IN CONTRACT, INFRINGEMENT, NEGLIGENCE, STRICT LIABILITY, OTHER TORT OR OTHERWISE) SHALL IN NO EVENT EXCEED THE PURCHASE PRICE OF THE EQUIPMENT IN RESPECT OF WHICH SUCH CAUSE ARISES OR, AT SELLER'S OPTION, THE REPAIR OR REPLACEMENT OF SUCH EQUIPMENT, AND IN NO EVENT SHALL SELLER BE LIABLE FOR INCIDENTAL, CONSEQUENTIAL, OR PUNITIVE DAMAGES RESULTING FROM ANY SUCH CAUSE. NOTWITHSTANDING THE FOREGOING, SELLER SHALL NOT BE LIABLE FOR DAMAGES CAUSED BY DELAY IN PERFORMANCE. The term "Consequential Damages" shall include, but not be limited to, loss of anticipated profits, loss of use, loss of revenue and cost of capital. Seller shall not be liable for, and Customer assumes liability for, all personal injury and property damage connected with the handling, transportation, possession, use, further manufacture, or resale of the Equipment. No costs or charges incurred by Customer will be paid by Seller unless authorized in writing in advance by Seller.

13. EXCUSE OF PERFORMANCE: (a) Deliveries may be suspended, delayed, or canceled by Seller, without liability to Customer or any other person, in the event of Act of God, war, riot, fire, explosion, accident, flood, natural disaster, sabotage, equipment or computer failure; acts, omissions, or failures by Seller's suppliers or other third parties; lack of or delays in obtaining adequate fuel, power, raw materials, components, labor, containers, or manufacturing or transportation facilities; compliance with governmental requests, laws,

Unitech Incorporated

regulations, order or actions; breakage or failure of machinery or apparatus; force majeure; national defense requirements or any other event, whether or not of the class or kind enumerated herein, beyond the reasonable control of Seller; or in the event of labor trouble, strike, lockout or injunction (provided that Seller shall not be required to settle a labor dispute against its own best judgment); which event makes impracticable the manufacture or delivery of a shipment of the Equipment or of a material or component upon which the manufacture of the Equipment is dependent.

b) If Seller determines that its ability to supply the total demand for the Equipment or obtain any or a sufficient quantity of a material or component used directly or indirectly in the manufacture of the Equipment, is hindered, limited or made -impracticable, Seller may allocate its available supply of the Equipment or such material or component (without obligation to acquire other supplies of any such Equipment, material, or component) among itself and its purchasers on such basis as Seller determines to be equitable without liability for any failure or delay of performance which may result therefrom.

c) Deliveries suspended or not made by reason of this section shall at Seller's option, either be canceled or the time for delivery shall automatically be extended for a period equal to the suspension period, without liability, but this Contract shall otherwise remain unaffected.

14. WAIVERS AND RELEASES: Except as provided in paragraphs 9 and 11 and except for the willful misconduct or gross negligence of Seller, its employees or agents, Customer hereby releases Seller, its employees, agents and "controlling persons" (within the meaning of Section 20(a) of the Securities Exchange Act of 1934, as amended) from all liabilities, claims, costs, expenses, losses and damages of any and every kind arising out of or resulting, directly or indirectly, from any defect or failure of the Equipment or any act, omission, error or delay in the performance, or nonperformance of Seller's obligations and duties under this Contract. To the extent, if any, that Seller, its employees, agents or "controlling persons" shall have any liability under this Contract, Customer's exclusive remedy shall be as set forth in paragraph 12. CUSTOMER WAIVES ALL CLAIMS FOR CONSEQUENTIAL DAMAGES AND ALL CLAIMS REGARDING LOSS OF REVENUE, INCOME, PROFIT AND USE OR DAMAGES, WHETHER SAME BE DIRECT, INDIRECT, INCIDENTAL OR CONSEQUENTIAL.

15. GOVERNING LAW, VENUE AND LIMITATIONS: (a) This Contract shall be governed by and construed in accordance with the laws of the State of Texas.

b) Each of the parties hereto submits irrevocably to the non-exclusive jurisdiction of the courts of the State of Texas, in Harris County, as regards any claim or matter arising under this Contract.

c) No action or claim, regardless of form, arising out of transactions under this Contract may be brought by either party, more than two years after the cause of action or claim has accrued.

16. OTHER TERMS AND CONDITIONS: (a) Customer shall not (by operation of law or otherwise) assign its rights or delegate its performance hereunder without the prior written consent of Seller, and any attempted assignment or delegation by Customer without such consent shall be void.

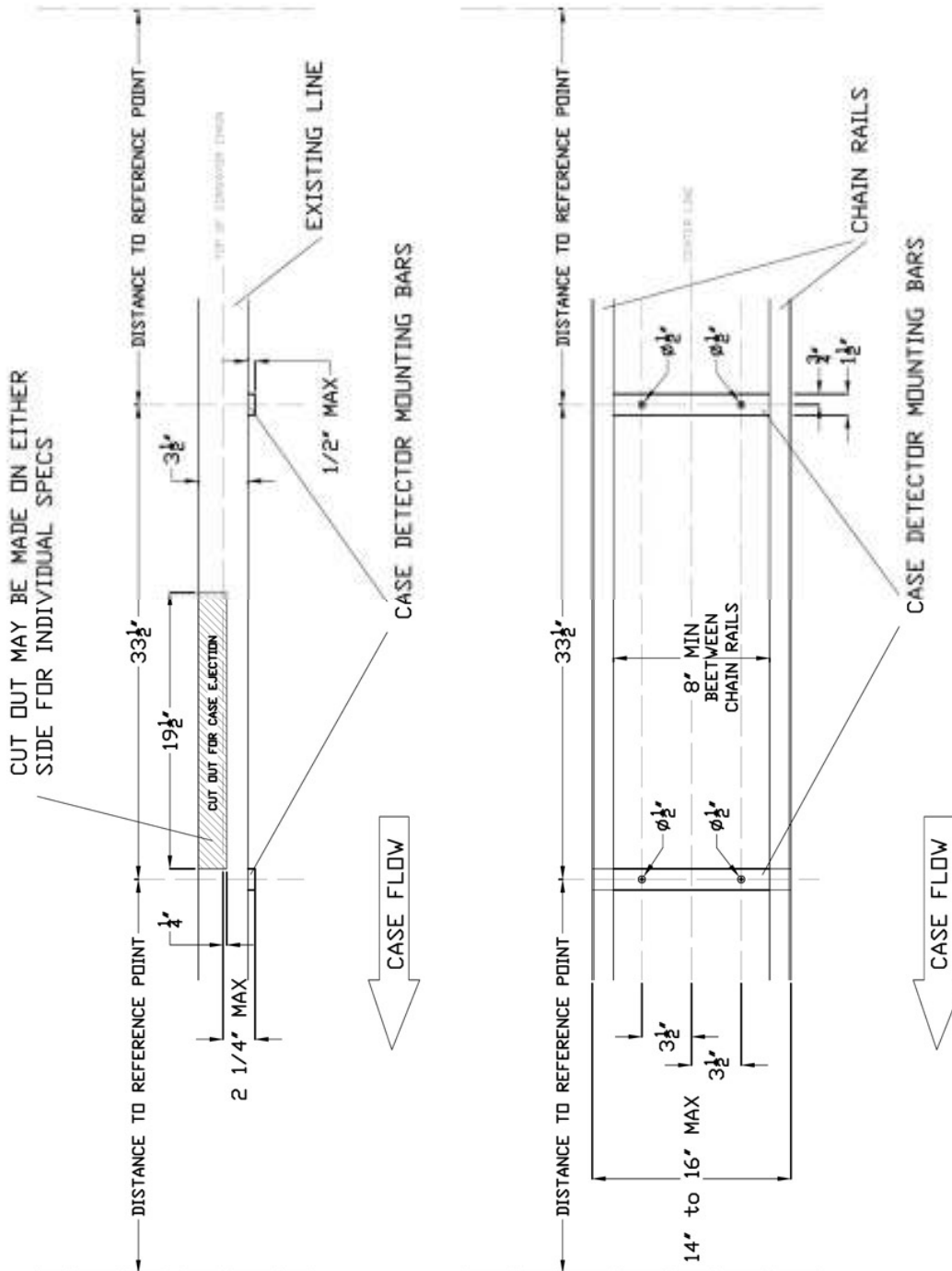
b) Seller reserves the right to modify the design of any Equipment without obligations or notifications, and Seller is not obligated to so modify Equipment previously or subsequently sold.

c) Should any clause, sentence or part of this Contract be held invalid, such holding shall in no way affect the validity of the remainder, which shall remain in full effect. Failure to enforce any or all of the provisions of this Contract in a particular instance or instances shall not constitute a waiver or preclude subsequent enforcement thereof.

Unitech Incorporated

APPENDIX A

Mounting Bracket



Unitech Incorporated

APPENDIX B

Electrical Diagram

Unitech Incorporated

APPENDIX C

Pneumatic Diagram